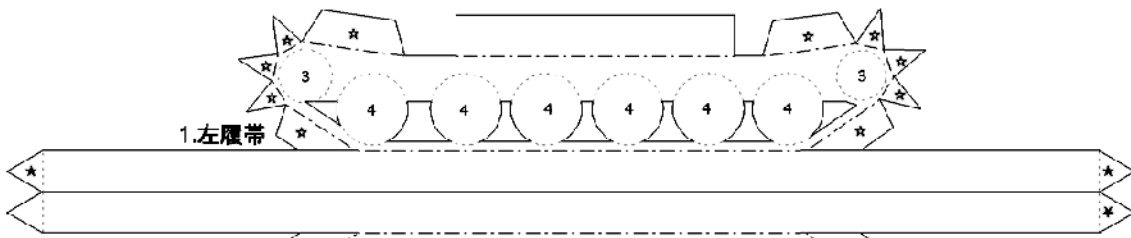
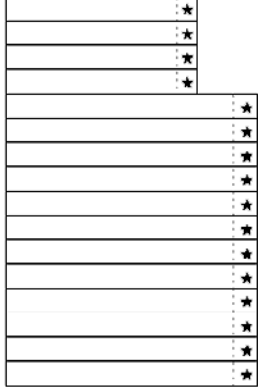


# ASU-85

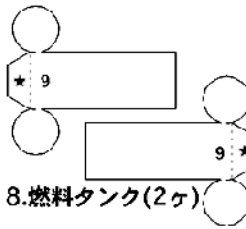
1/72 paper model  
Airborn Selfpropelled Anti Tank Gun / 960's Soviet



### 3. 誘導輪・起動輪



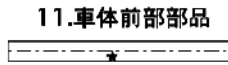
### 4. 転輪(12)



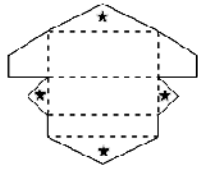
### 8. 燃料タンク(2ヶ)



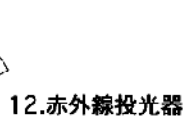
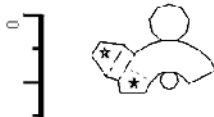
### 9. タンク台(2ヶ)



### 11. 車体前部部品



### 10. 後部雑具箱



### 12. 赤外線投光器



### 13. 換気装置1



### 14. 換気装置2



### 15. 前部雑具箱



### 16. 視察装置1



### 17. 視察装置2



### 18. 視察装置3



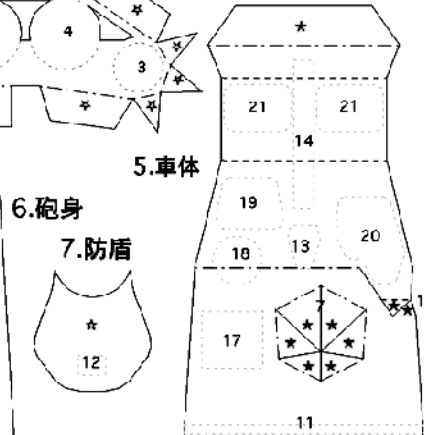
### 19. ハッチ1



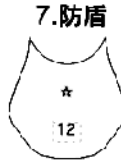
### 20. ハッチ2



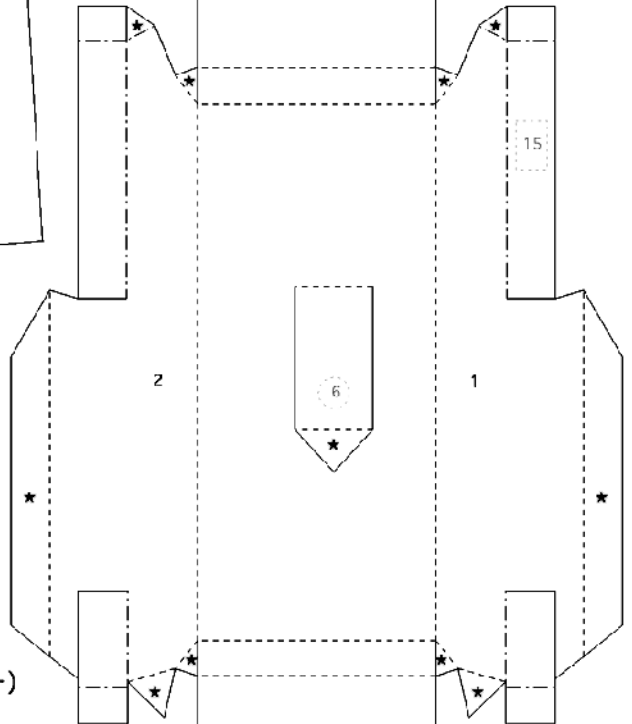
### 21. ハッチ3(2ヶ)



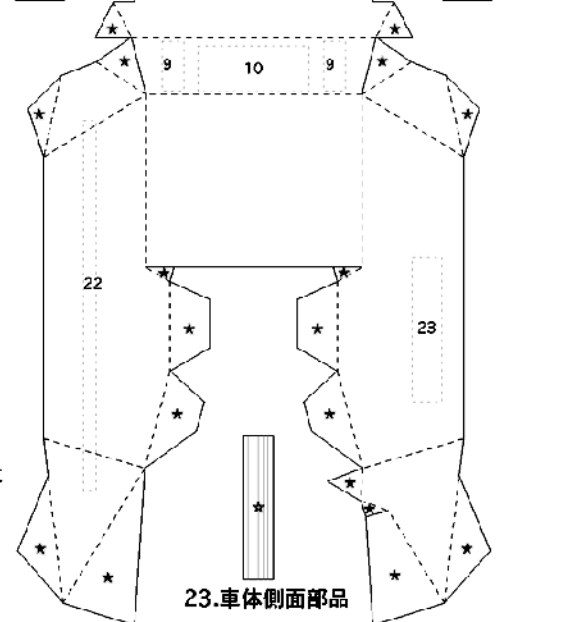
### 6. 砲身



### 7. 防盾



### 22. 丸太



### 23. 車体側面部品



All rights reserved to YOSHIOKA, Satoshi.

### 凡例

- ★ のりしろ (表面)
- ☆ のりしろ (裏面)
- 切断線 (太い実線)
- - - 山折線 (破線)
- · - 谷折線 (一点鎖線)
- · · 部品取付位置 (薄い破線)
- 19 取付部品番号 (表面)
- 15 取付部品番号 (裏面)